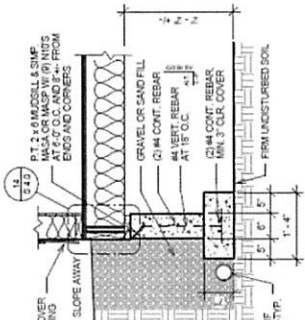
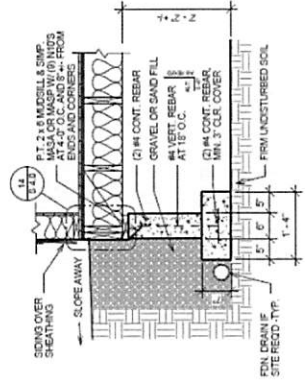


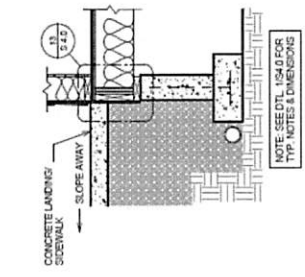
① BUILDING SECTION
3/8" = 1'-0"



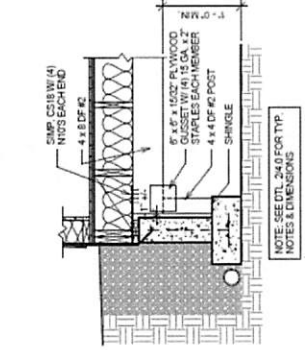
1 SIDEWALK FOOTING
3/4" = 1'-0"



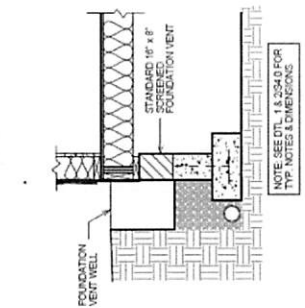
2 ENDWALL FOOTING
3/4" = 1'-0"



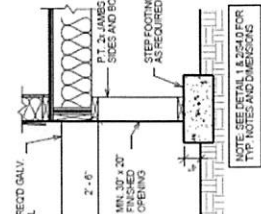
3 FOOTING AT LANDING/WALKWAY
3/4" = 1'-0"



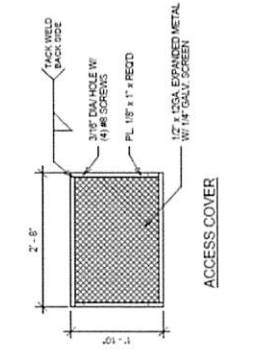
4 ENDWALL FOOTING AT BEAMS
3/4" = 1'-0"



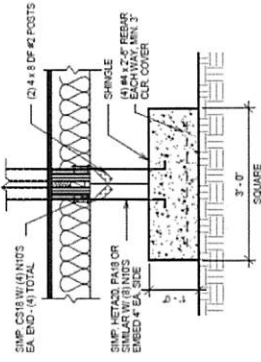
5 FOUNDATION VENT
3/4" = 1'-0"



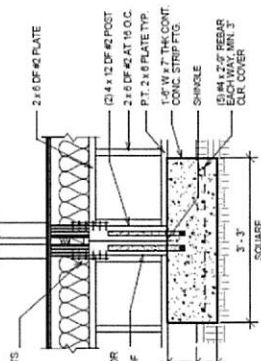
6 CRAWLSPACE ACCESS
3/4" = 1'-0"



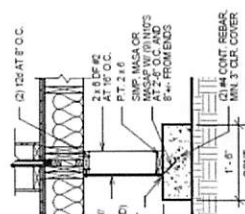
7 MID-SPAN COLUMN FOOTING
3/4" = 1'-0"



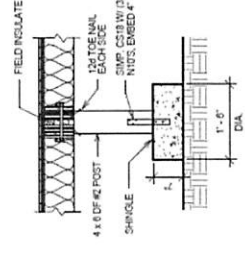
8 ENDWALL COLUMN FOOTING AT MARRIAGE
3/4" = 1'-0"



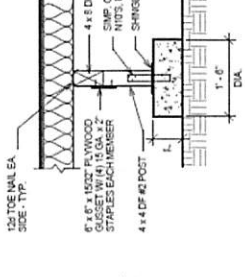
9 TRANSFER HEADER COLUMN FOOTING
3/4" = 1'-0"



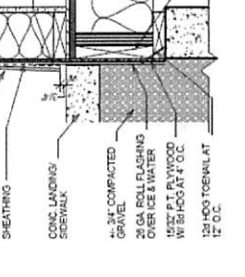
10 WALL FOOTING AT MARRIAGE
3/4" = 1'-0"



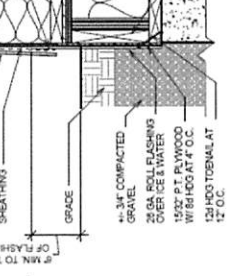
11 MARRIAGE LINE FOOTING
3/4" = 1'-0"



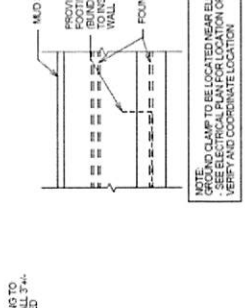
12 MID-SPAN FOOTING
3/4" = 1'-0"



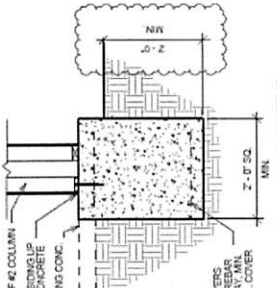
13 FLASHING AT LANDING/WALKWAY
1 1/2" = 1'-0"



14 FLASHING AT GRADE
1 1/2" = 1'-0"



15 GROUND CLAMP
3/4" = 1'-0"



16 PORCH COLUMN FOOTING
3/4" = 1'-0"

REV	DESCRIPTION	DATE	BY
2	COLUMN FOOTING DEPTH	10/18	TS

SHEET FOUNDATION DETAILS	
PROJ.	28' x 140' MODULAR OFFICE/SCHOOL
DESIGNER	KCDA - INSPIRE-GRANGER
DATE	10/18