

OWNER: 600-183  
 DATE: 03/26/18  
 AS BUILT: 03/26/18  
 CALL BEFORE YOU DIG: Know what's below.  
 SHEET: 02 of 4  
 PROJECT: PARKING LOT GRADING PLAN  
 CLIENT: MABTON HEAD START FACILITY  
 LOCATION: WASHINGTON, MABTON

DESIGNED BY: [Signature]  
 APPROVED BY: [Signature]  
 FILE: 17-110-0018.dwg

**SPINK ENGINEERING**  
 1700 1st Ave. SW, Suite E, Everett, WA 98201-3207 • www.spink.com

REG. IN WA: 17000  
 REG. IN OR: 17000  
 REG. IN ID: 17000  
 REG. IN MT: 17000  
 REG. IN NE: 17000  
 REG. IN ND: 17000  
 REG. IN SD: 17000  
 REG. IN WY: 17000

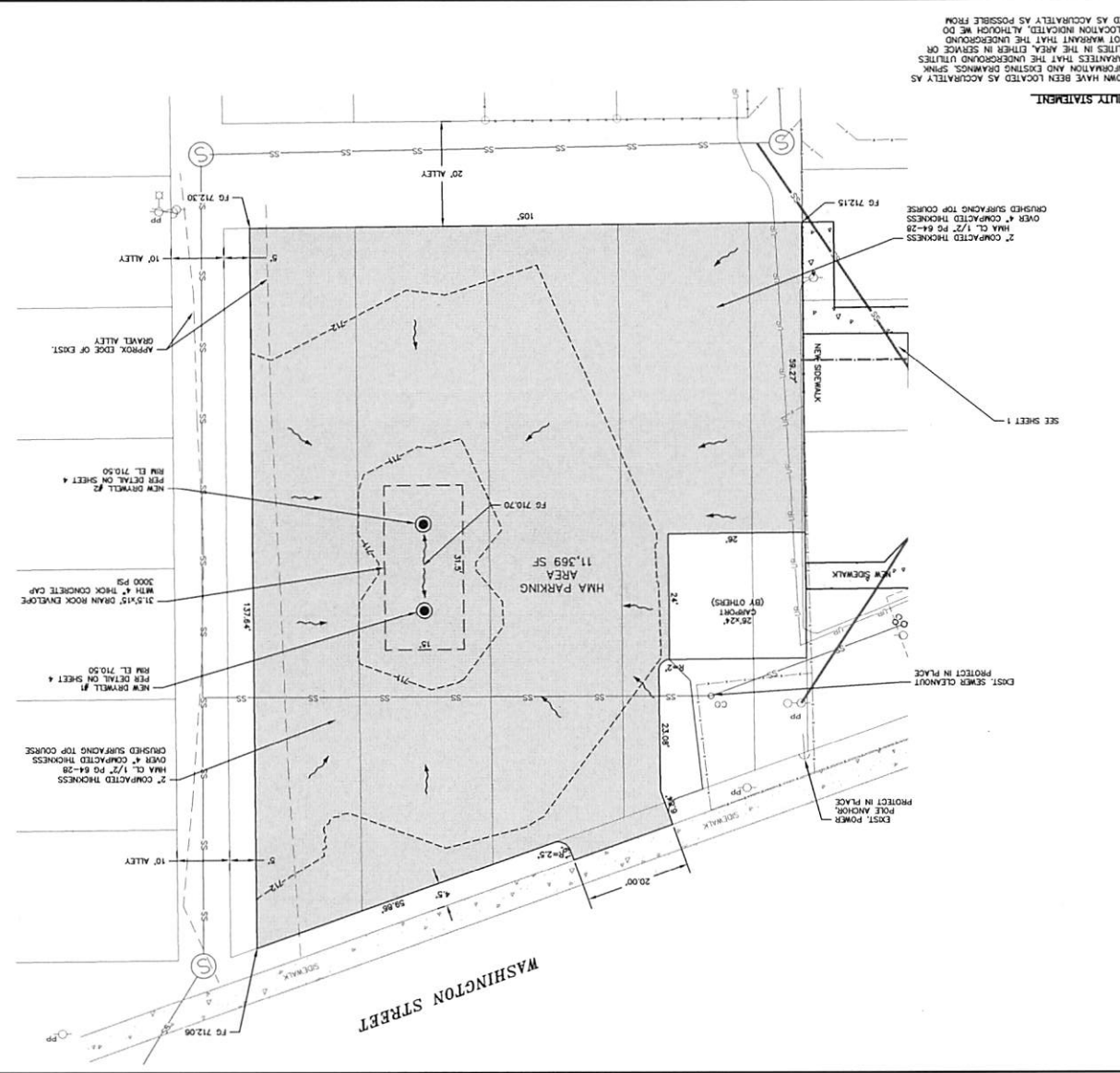
**811**  
 Call before you dig. Know what's below.

NEW PARKING LOT AREA = 11,369 S.F.

**COMPACTION STANDARDS**  
 HMA CLASS 1/2" - 92% MAX. DENSITY - AASHTO T200-88  
 CRUSHED SURFACING - 92% MAX. DENSITY - ASTM D-1557  
 TOP 6" SUBGRADE - 92% MAX. DENSITY - ASTM D-1557

SCALE IN FEET  
 0 10 20 30

NORTH



**UTILITY STATEMENT**  
 THE UNDERGROUND UTILITIES SHOWN HAVE BEEN LOCATED AS ACCURATELY AS POSSIBLE FROM POSSIBLE FIELD SURVEY INFORMATION AND EXISTING DIAGNOSIS. SPINK ENGINEERING LLC MAKES NO GUARANTEES THAT THE UNDERGROUND UTILITIES SHOWN COMPRISE ALL SUCH UTILITIES IN THE AREA, EITHER IN SERVICE OR ABANDONED. FURTHER, WE DO NOT WARRANT THAT THE UNDERGROUND UTILITIES SHOWN ARE IN EXACT LOCATION INDICATED, ALTHOUGH WE DO CERTIFY THAT THEY ARE LOCATED AS ACCURATELY AS POSSIBLE FROM INFORMATION AVAILABLE.

REV	DATE	BY	DESCRIPTION
1	03/27/17	JSP	REVISED PER COMMENTS
2	03/27/17	JSP	REVISED PER COMMENTS
3	03/27/17	JSP	REVISED PER COMMENTS
4	03/27/17	JSP	REVISED PER COMMENTS
5	03/27/17	JSP	REVISED PER COMMENTS
6	03/27/17	JSP	REVISED PER COMMENTS
7	03/27/17	JSP	REVISED PER COMMENTS
8	03/27/17	JSP	REVISED PER COMMENTS



**SPINK ENGINEERING**  
 1045 34th Ave. SE, Ste. E, Everett, WA 98203-5618 • www.spink.com

DATE: 03/27/17  
 DRAWN BY: JSP  
 CHECKED BY: JSP  
 APPROVED BY: JSP  
 FILE: 17-100-0018.dwg

INSPIRE  
 PARKING LOT STRIPING PLAN  
 MABTON HEAD START FACILITY  
 WASHINGTON

SHEET  
**03 of 4**  
 DRAWING NO. 17-110  
 DWG# 600-183

**NOTES:**  
 1. ALL STRIPING SHALL BE PER WOODOT STD. 44-1710-200  
 2. SEE SHEET 1 FOR UTILITY INFORMATION.  
 3. SEE SHEET 2 FOR GRADING INFORMATION.



**UTILITY STATEMENT:**  
 THE UNDERGROUND UTILITIES SHOWN HAVE BEEN LOCATED AS ACCURATELY AS POSSIBLE FROM FIELD SURVEY INFORMATION AND EXISTING DRAWINGS. SPINK ENGINEERING LLC MAKES NO GUARANTEES THAT THE UNDERGROUND UTILITIES SHOWN ARE ACCURATE. THE CLIENT SHALL BE RESPONSIBLE FOR VERIFYING OR ADVANCING UTILITIES. FURTHER, WE DO NOT WARRANT THAT THE UNDERGROUND UTILITIES SHOWN ARE IN EXACT LOCATION INDICATED, ALTHOUGH WE DO OUR BEST TO LOCATE AS ACCURATELY AS POSSIBLE FROM INFORMATION AVAILABLE.

SEE SHEET 1

TOTAL PARKING STALLS = 19

NO	DATE	DESCRIPTION
1		ISSUE FOR PERMITS
2		ISSUE FOR BIDDING
3		ISSUE FOR CONSTRUCTION
4		ISSUE FOR AS-BUILT
5		ISSUE FOR RECORD SET
6		ISSUE FOR ARCHIVE
7		ISSUE FOR CLOSURE
8		ISSUE FOR DEMOLITION
9		ISSUE FOR RECONSTRUCTION
10		ISSUE FOR MAINTENANCE
11		ISSUE FOR REPAIRS
12		ISSUE FOR RENOVATION
13		ISSUE FOR REPAIRS
14		ISSUE FOR RENOVATION
15		ISSUE FOR REPAIRS
16		ISSUE FOR RENOVATION
17		ISSUE FOR REPAIRS
18		ISSUE FOR RENOVATION
19		ISSUE FOR REPAIRS
20		ISSUE FOR RENOVATION



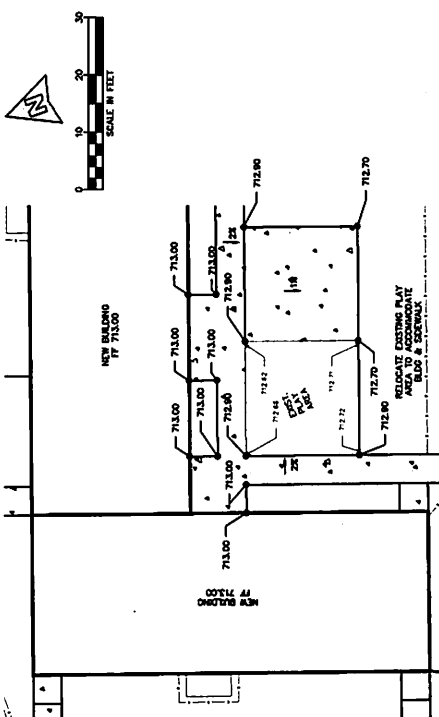
**SPINK**  
ENGINEERING

100 Main Ave. Ste. 2000, E. Falmouth, ME 04903-2000  
Tel: 207-833-2000 Fax: 207-833-2001

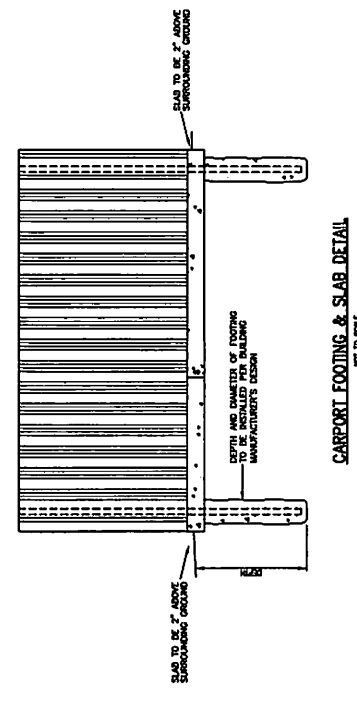
DATE: 11/19/2018  
APPROVED BY: JMB  
DESIGNED BY: JMB  
DRAWN BY: JMB

MARTON HEAD START FACILITY  
DETAIL SHEET  
INSPIRE

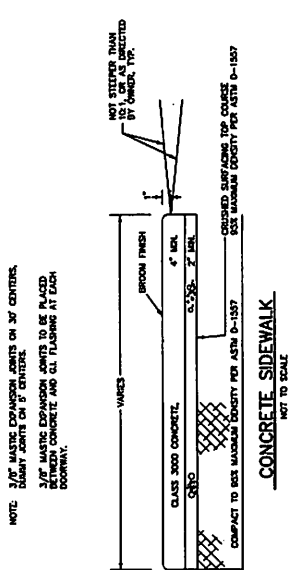
SHEET  
04 of 4  
JOB NO. 17-110  
DRAWN BY 600-183



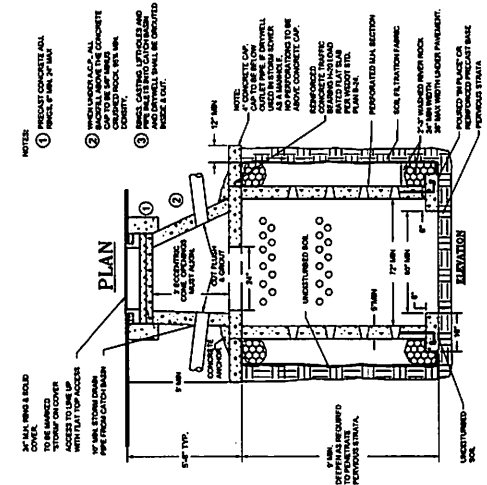
**PLAY AREA ELEVATION DETAIL**  
1"-10'



**CARPORT FOOTING & SLAB DETAIL**  
NOT TO SCALE



**CONCRETE SIDEWALK**  
NOT TO SCALE



**DRYWELL DETAIL**  
NOT TO SCALE